

# ActiveLED® Lighting for Petrol Dispenser Canopy and Convenience Store

ActiveLED®  
Energy Efficient Lighting and Controls  
Made in USA



ActiveLED® Lighting provides outstanding illumination for any aspect of fuel dispensing canopy, roadway, perimeter and convenience store; giving a safe and professional image which is further protected by the ActiveLED 10 year no-light-loss guarantee.



## Roadway and Parking Lights

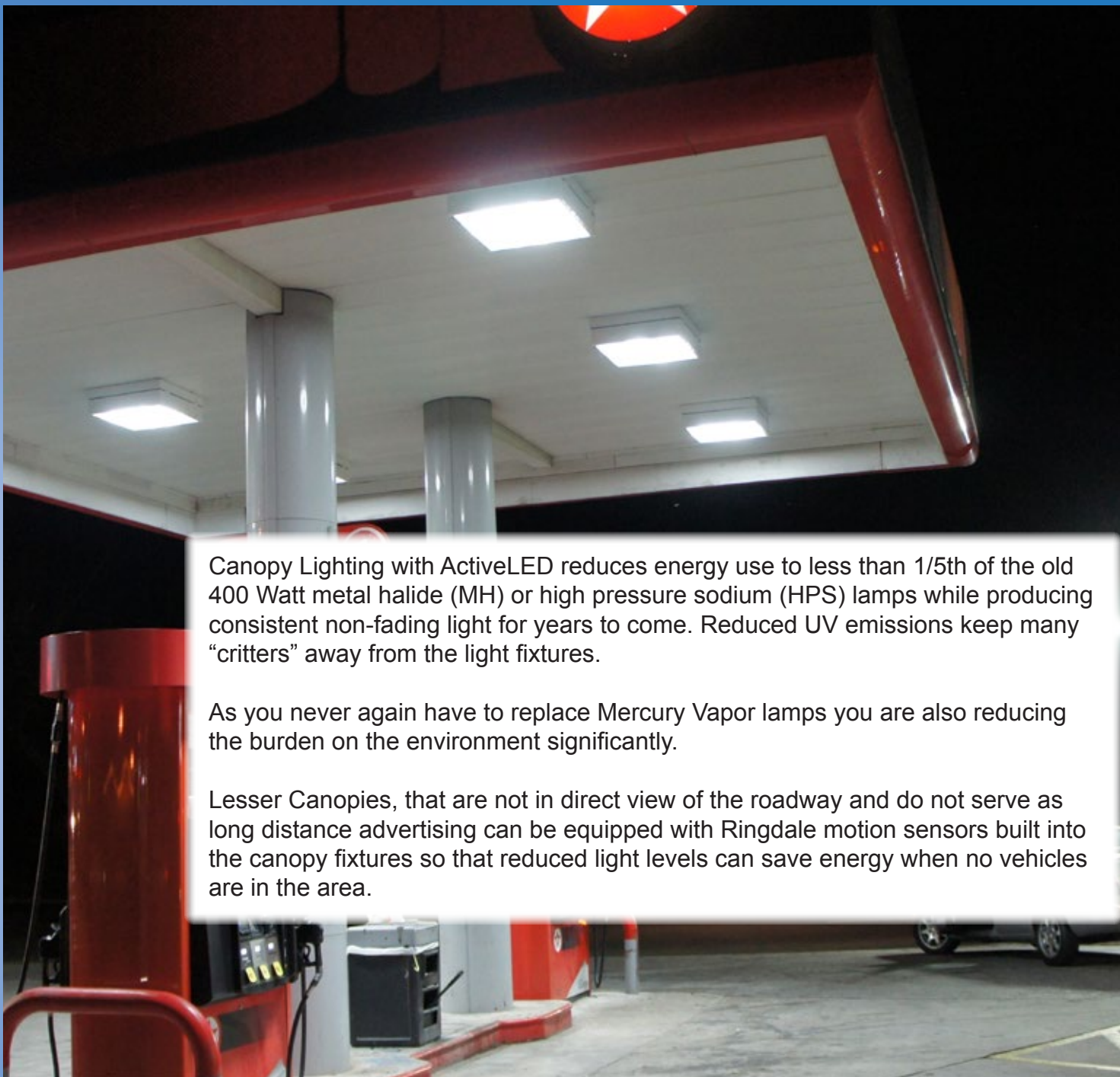


ActiveLED Street Lighting technology is truly among the world's leading technologies with unsurpassed light output per watt and uniform distribution, minimum glare and a 10 year "no light loss" guarantee.

White daylight at 5000K makes the approach safer and more visible from a longer distance while colors appear more vibrant compared to dingy orange HPS lighting.

The use of ActiveLED streetlighting reduces maintenance cost significantly as it extends re-lamping cycles to 10 years or more.

Built-in daylight sensors, programmable light levels and timers allow further savings in appropriate applications.



Canopy Lighting with ActiveLED reduces energy use to less than 1/5th of the old 400 Watt metal halide (MH) or high pressure sodium (HPS) lamps while producing consistent non-fading light for years to come. Reduced UV emissions keep many “critters” away from the light fixtures.

As you never again have to replace Mercury Vapor lamps you are also reducing the burden on the environment significantly.

Lesser Canopies, that are not in direct view of the roadway and do not serve as long distance advertising can be equipped with Ringdale motion sensors built into the canopy fixtures so that reduced light levels can save energy when no vehicles are in the area.

## Surface Mounted and Recessed Canopy Light Fixtures





## Wall Pack Lights



ActiveLED Wall Pack Lights have the longest history of unattended daily performance in all weather situations, holding their own against 260 Watt and 400 Watt wall pack lights.

Optional built-in daylight and motion sensors achieve even higher energy savings, longer requiring the attendant to turn lights on at night or off in the morning.

Programable light levels and active-rest levels provide for additional energy savings, while an optional built-in battery backup can give extra security during power failures or catastrophic events.

## Wall Sconce Lights



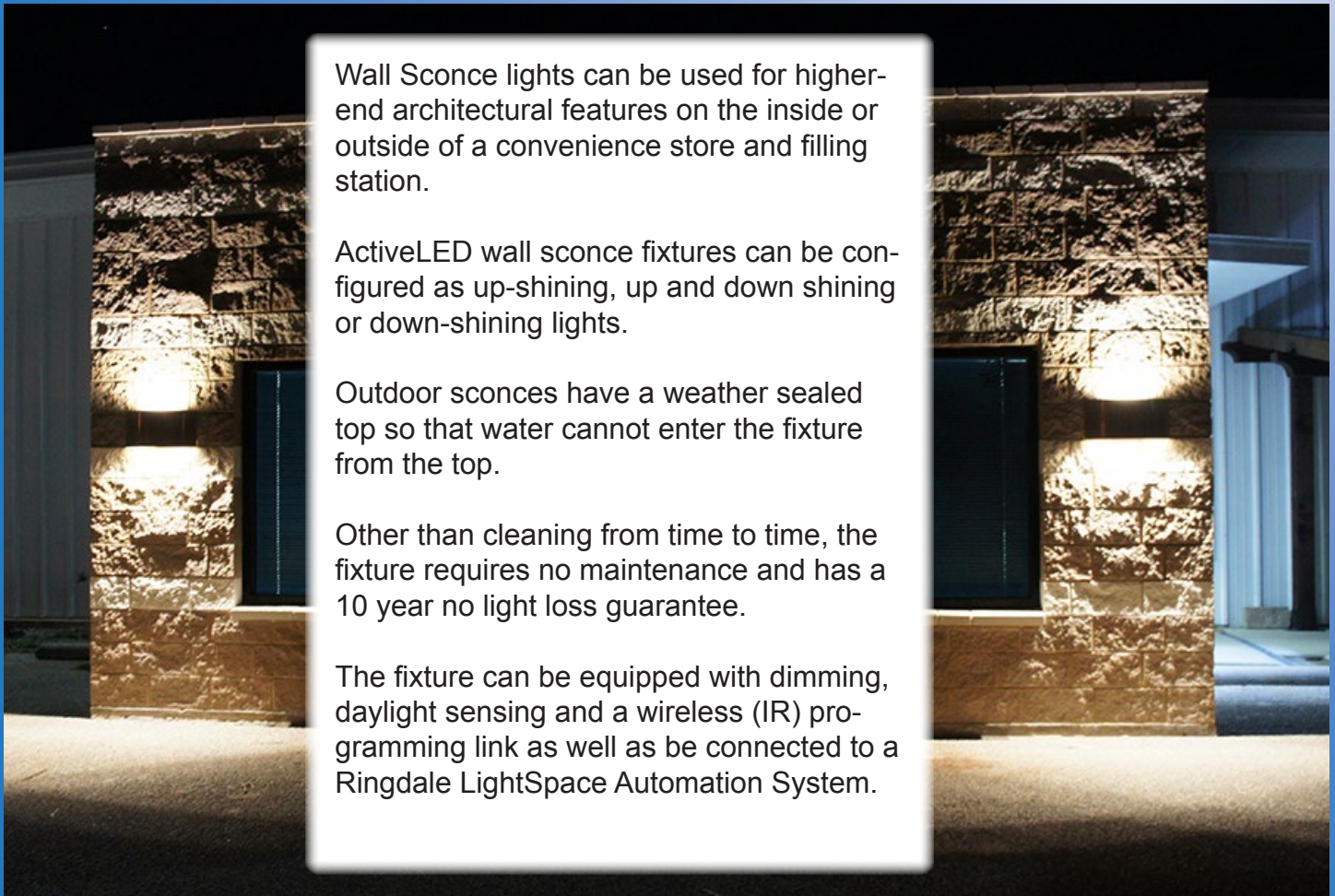
Wall Sconce lights can be used for higher-end architectural features on the inside or outside of a convenience store and filling station.

ActiveLED wall sconce fixtures can be configured as up-shining, up and down shining or down-shining lights.

Outdoor sconces have a weather sealed top so that water cannot enter the fixture from the top.

Other than cleaning from time to time, the fixture requires no maintenance and has a 10 year no light loss guarantee.

The fixture can be equipped with dimming, daylight sensing and a wireless (IR) programming link as well as be connected to a Ringdale LightSpace Automation System.



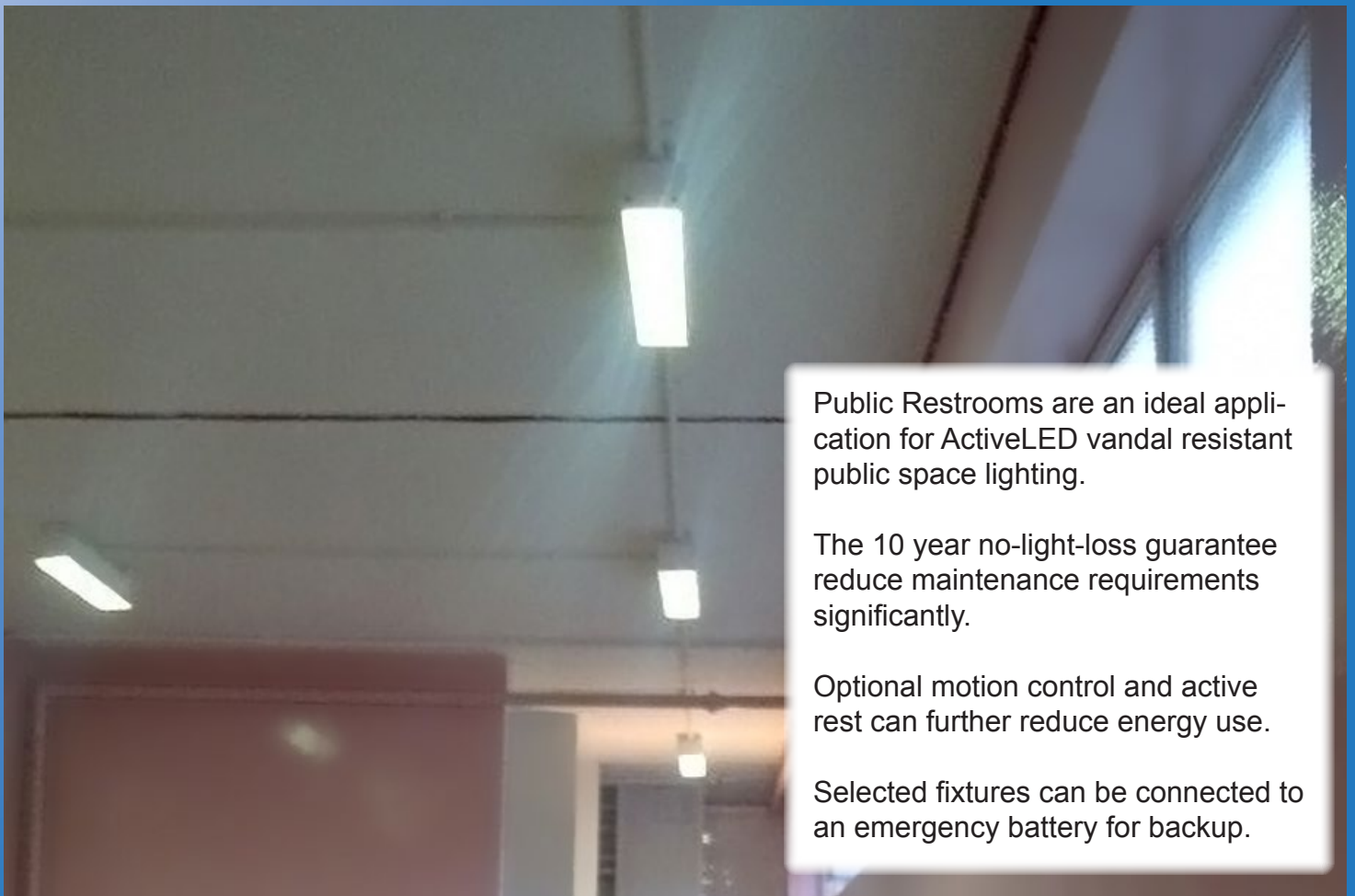
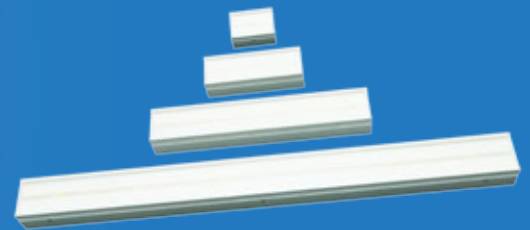
Linear Lighting for overhang and store front lighting is vandal and weather resistant producing close to natural daylight color temperatures, highlighting brand colors vibrantly and extending visibility from afar.

The fixtures can be connected to a 0 to 10V control of a legacy building automation system or a Ringdale LightSpace Automation System or an ambient light sensor to maximize the lights' advertising effect.



Public Space Lights

Awning - Cold Storage - Restrooms



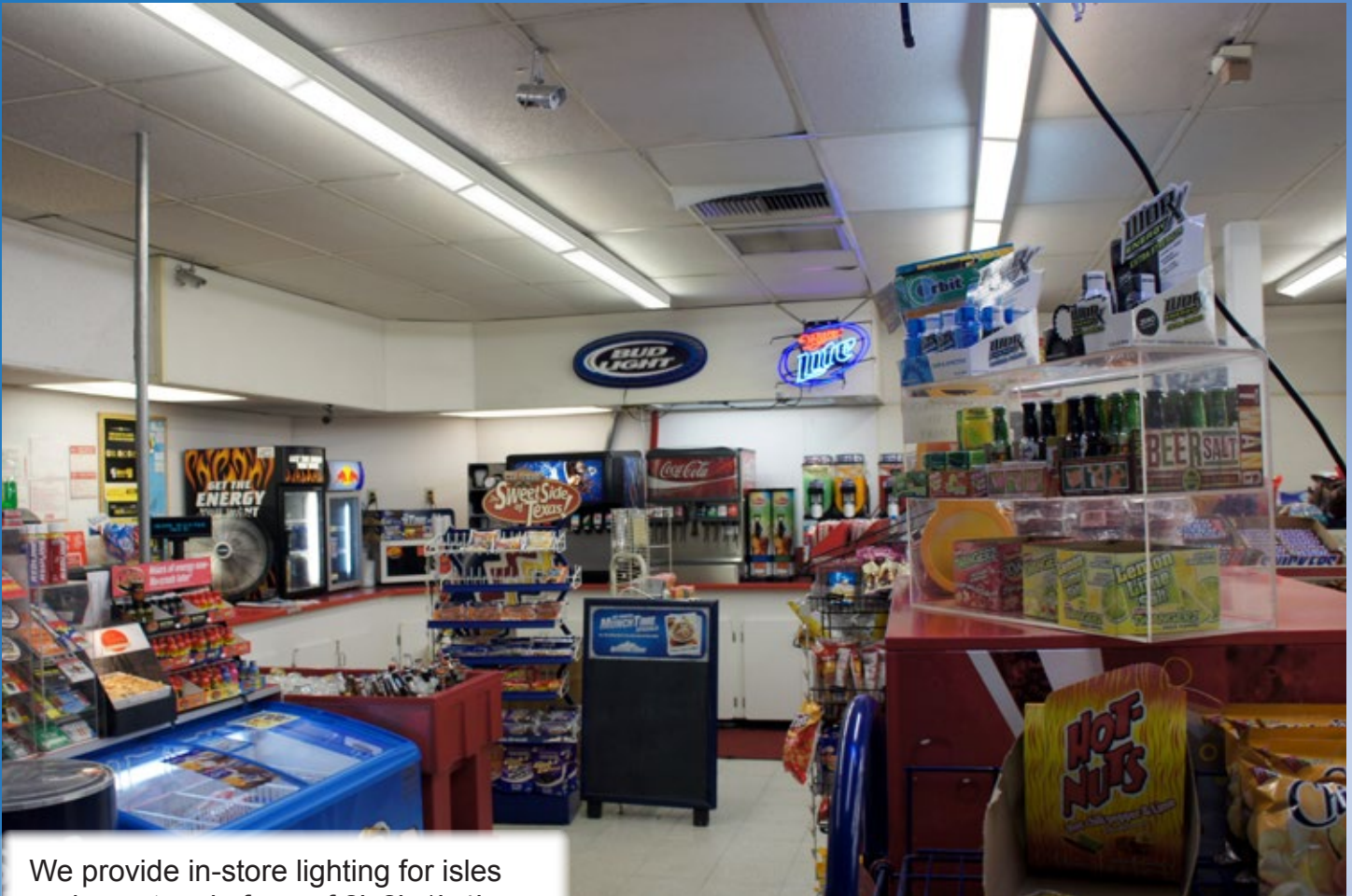
Public Restrooms are an ideal application for ActiveLED vandal resistant public space lighting.

The 10 year no-light-loss guarantee reduce maintenance requirements significantly.

Optional motion control and active rest can further reduce energy use.

Selected fixtures can be connected to an emergency battery for backup.





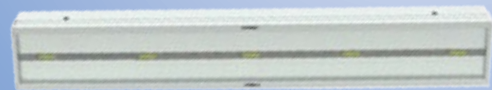
We provide in-store lighting for aisles and counters in form of 2'x2', 1'x4', 2'x4' or European form factor dropped ceiling troffer light fixtures, suspended box lights or surface mounted lights all with ActiveLED technology and a 10 year no light loss guarantee.

All recessed ceiling fixtures are fully dimmable and controllable from a Ringdale Automation System for additional energy savings and remote control.

All recessed and external lights can be equipped with or plugged into a standard Ringdale Emergency Battery Pack providing stand-by power for emergency lighting.

A broom-safe diffuser option helps to eliminate breakage of diffusers on low ceilings due to floor cleaning operations.

## Surface Mount



## Recessed Troffers

1'x4' (30cm x 120cm)



2'x4' (60cm x 120cm)



2'x2' (60cm x 60cm)



## Ringdale LightSpace® Automation

All or selective fixtures can be controlled and managed through a LightSpace Controller (LSC) which in-turn can be connected to a local area Ethernet network and the Internet.

The owner can manage and program the operation from a PC console connected to the LSC via Ethernet or WiFi with a WiFi bridge. The LSC can also be connected to the Internet and managed remotely.



## LightSpace Server

LightSpace Server is the central management system running on a Windows operating system.

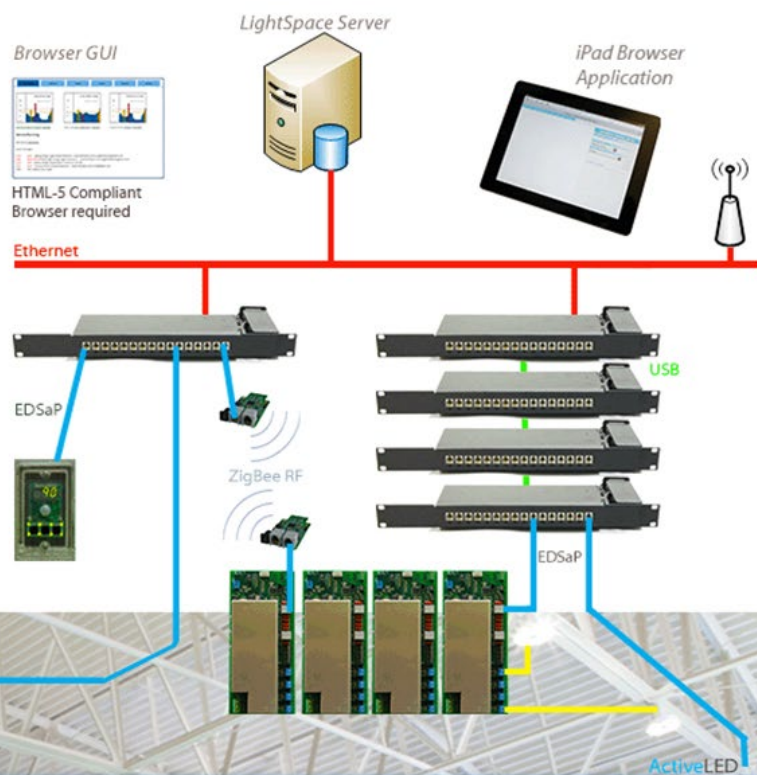
The main functions are:

- Enforcements of Rules
- Browser Access for Admins
- Browser Access for Facility
- Collection Of Lighting Events
- Collection of Power Usage
- Collection of Battery Voltage
- Collection of Temperatures
- Sending of Email Alerts
- Maintenance Notifications

The Server Software also acts as a gateway between the ZigBee radio network and the Ethernet network.

Operating System Platform: Microsoft 2003 Server or later, XP, Windows 7 or later.

Database: SQL-2005 Express, SQL 2008 or later.



**ActiveLED** light fixtures operate from 100V to 277V AC, 50 or 60 Hz as well as from a 48V DC supply, making them future proof for solar or wind and battery operation.

Canopy, streetlights and parking lot lights can be remotely adjusted and programmed, using a Ringdale wireless link dongle connected to the USB port of a laptop.

ActiveLED extends its 5 year power supply warranty to 10 years if a Ringdale surge suppression device is used with each fixture.

Ringdale provides light-level simulation and layout services for its lighting products as well as specialty lighting design for backlit signs of any shape.

The Return on Investment for late night or 24 hour convenience store and gas dispensing canopy is exceptional.

**ActiveLED** light fixtures carry a 10 year “no light loss” guarantee for 90,000 hours of continuous or interrupted operation the light output will be at least 90% of the original light output.

We manufacture more than 100 light fixture types, so if you do not see what you are looking for in this brochure, contact us and we would be delighted to help.

**ActiveLED**<sup>®</sup>  
Energy Efficient Lighting and Controls

**[www.ActiveLED.com](http://www.ActiveLED.com)**

Call us now USA: +1-512-288-9080 UK: +44-1444-870408 Japan: +81-3-5288-5310